

VERCIDA.COM

THE VERCIDA

# DIVERSITY 20 CALENDAR 24



# KEEPING THE FAITH MONTH

# JANUARY

M T W T F S S

1 WORLD DAY OF PEACE	2	3	4 WORLD BRAILLE DAY	5	6 EPIPHANY (CHRISTIAN)	7 CHRISTMAS DAY (ORTHOODOX)
8 ETHNICITY PAY GAP DAY	9	10	11	12	13 LOHRI - MAGHI (HINDU/SIKH)	14 NEW YEAR (ORTHOODOX)
15 MARTIN LUTHER KING JR. DAY / 5 SHEVAT (JUDAISM)	16	17	18 BODHI DAY (BUDDHIST)	19	20	21 WORLD RELIGION DAY
22	23	24	25 BURNS NIGHT (SCOTLAND) / MAHAYANA NEW YEAR (BUDDHIST)	26	27 HOLOCAUST MEMORIAL DAY	28
29	30	31	1	2	3	4
5	6	7	8	9	10	11

This month, VERCIDA dives into the richness of religious and cultural diversity. We embrace conversations that celebrate and honour the various faiths that contribute to the fabric of our global community, fostering understanding and unity.



# LGBT+ HISTORY MONTH

# FEBRUARY

M	T	W	T	F	S	S
29	30	31	1 NATIONAL FREEDOM DAY / IMBOLC CANDLEMAS (WICCA/PAGAN)	2 IMBOLC (WICCA/ PAGAN) / CANDLEMAS (CHRISTIAN)	3	4 WORLD CANCER DAY
5 NATIONAL HATE CRIME AWARENESS WEEK	6 INTERNATIONAL DAY OF ZERO TOLERANCE TO FEMALE GENITAL MUTILATION	7	8	9	10 CHINESE NEW YEAR	11 INTERNATIONAL DAY OF WOMEN AND GIRLS IN SCIENCE
12	13 SHROVE TUESDAY (CHRISTIAN)	14 LENT (CHRISTIAN) (STARTS) / ST VALENTINE'S DAY (CHRISTIAN)	15 NIRVANA DAY (BUDDHIST)	16	17	18 LAILAT AL MIRAJ (MUSLIM)
19	20 WORLD DAY OF SOCIAL JUSTICE	21	22	23 INTERNATIONAL STAND UP TO BULLYING DAY	24	25
26	27	28	29	1	2	3
4	5	6	7	8	9	10

Celebrating the vibrant history of the LGBT+ community, acknowledging important historical and societal milestones, triumphs and ongoing challenges. We recognise the stories of resilience and progress, calling for a culture of understanding and acceptance around the world.



# WOMEN'S HISTORY MONTH

# MARCH

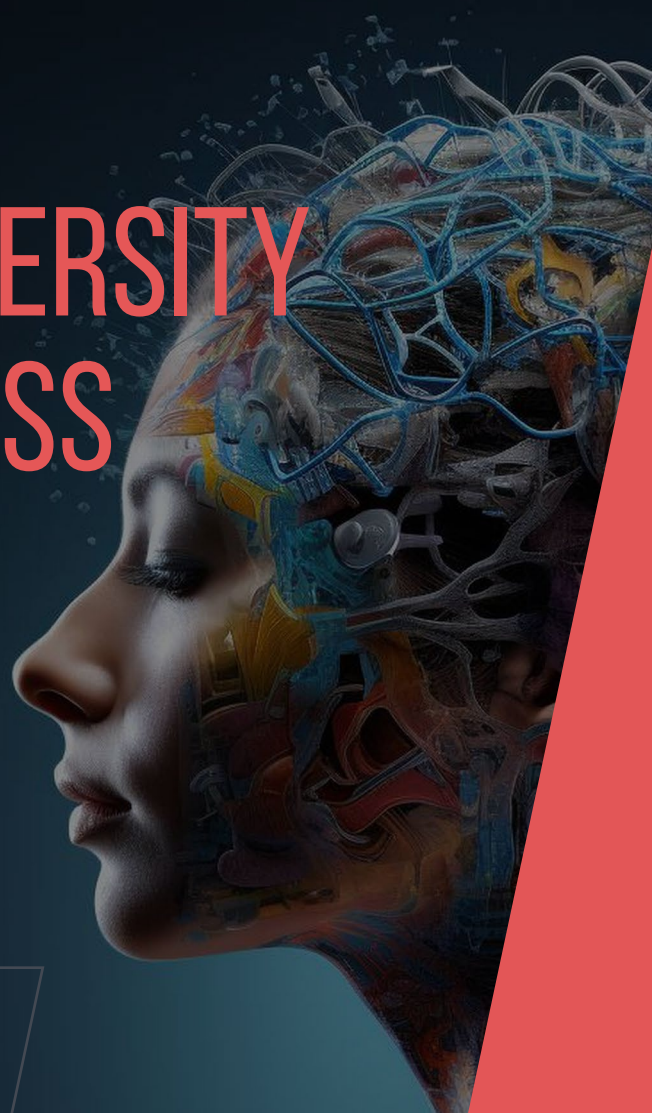
M T W T F S S

26	27	28	29	1 INTERNATIONAL WHEELCHAIR DAY / ST DAVID'S DAY (WALES)	2	3 WORLD HEARING DAY
4 NATIONAL CAREERS WEEK	5	6	7	8 MAHA SHIVARATRI (HINDU) / INTERNATIONAL WOMEN'S DAY	9	10 RAMADAN (MUSLIM) (STARTS) / MOTHER'S DAY
11	12	13 BRITISH SIGN LANGUAGE WEEK	14	15	16	17 ST PATRICK'S DAY
18 NEURODIVERSITY CELEBRATION WEEK	19	20 SPRING EQUINOX / OSTARA (WICCA/PAGAN) / NAW-RUZ(BAHÁ'Í)	21 WORLD DOWNS SYNDROME DAY / ELIMINATION RACIAL DISCRIMINATION	22	23	24 PURIM (JUDAISM)
25 INTERNATIONAL DAY OF REMEMBRANCE OF THE VICTIMS OF SLAVERY	26 WORLD PURPLE DAY (EPILEPSY DAY)	27	28 LENT ENDS (CHRISTIAN)	29 GOOD FRIDAY (CHRISTIAN)	30 WORLD BIPOLAR DAY	31 TRANSGENDER DAY OF VISIBILITY
1	2	3	4	5	6	7

We honour the contributions of women throughout history. From the well-known pioneers to the unsung heroes, Women's History Month is a time to acknowledge and celebrate the achievements and positive impact of women worldwide.



# NEURODIVERSITY AWARENESS MONTH



M	T	W	T	F	S	S
1 EASTER MONDAY (CHRISTIAN)	2 WORLD AUTISM AWARENESS DAY	3	4	5	6	7 WORLD HEALTH DAY
8 INTERNATIONAL ROMANI DAY / RAMADAN (MUSLIM) ENDS	9	10 EID AL-FITR (MUSLIM)	11	12	13 VAISAKHI (HINDU, SIKH)	14
15	16	17	18	19	20	21
22 PASSOVER STARTS (JEWISH) / STEPHEN LAWRENCE DAY	23 ST. GEORGE'S DAY (CHRISTIAN)	24	25	26 LESBIAN VISIBILITY DAY	27 INTERNATIONAL GIRLS IN ICT DAY	28
29 NINTH DAY OF RIDVÁN (BAHÁ'Í)	30 PASSOVER (JEWISH) ENDS	1	2	3	4	5
6	7	8	9	10	11	12

Highlighting the advantages of neurodiversity, both in the workplace and within wider society. We promote understanding and acceptance of individuals with diverse neurological conditions, embracing the unique talents, strengths and perspectives which strengthen our workforce.



# MENTAL HEALTH AWARENESS MONTH

# MAY

M	T	W	T	F	S	S
29	30	1 MAY DAY BANK HOLIDAY / DEAF AWARENESS WEEK	2 TWELFTH DAY OF RIDVAN (BAHA'U'LLAH) / NATIONAL DAY OF PRAYER	3	4	5 INTERNATIONAL FAMILY EQUALITY DAY / ORTHODOX EASTER (CHRISTIAN)
6	7	8 NATIONAL DAY FOR STAFF NETWORKS	9	10	11	12
13 MENTAL HEALTH AWARENESS WEEK / BLACK INCLUSION WEEK	14	15 INTERNATIONAL DAY OF FAMILIES / BUDDHA'S BIRTH DAY	16 GLOBAL ACCESSIBILITY AWARENESS DAY	17 INTERNATIONAL DAY AGAINST HOMOPHOBIA, BIPHOBIA AND TRANSPHOBIA	18	19 PENTECOST (CHRISTIAN) / MALCOLM X'S BIRTHDAY
20 LEARNING AT WORK WEEK	21	22 SECOND PASSOVER (WORK PERMITTED) (JUDAISM)	23	24 DECLARATION OF THE BAB (BAHA'U'LLAH)	25	26 LAG B'OMER (WORK PERMITTED) (JUDAISM)
27 SPRING BANK HOLIDAY	28	29 ASCENSION OF BAHÁ'U'LLÁH (BAHA'U'LLAH)	30	31	1	2
3	4	5	6	7	8	9

This month we focus on breaking the stigma around mental health and highlight the advantages of seeking and providing psychological support. By encouraging open and honest conversations, providing support and promoting wellbeing, we aim to create a more compassionate and understanding society.



# PRIDE MONTH



M T W T F S S

27	28	29	30	31	<sup>1</sup> GLOBAL DAY OF PARENTS	<sup>2</sup> INDIAN CITIZENSHIP ACT OF 1924
3	4	<sup>5</sup> WORLD ENVIRONMENT DAY	6	7	8	9
<sup>10</sup> GURU ARJAN MARTYRDOM (SIKH) / CARERS WEEK	<sup>11</sup> SHAVUOT (JEWISH)	<sup>12</sup> LOVING DAY	13	14	<sup>15</sup> WAQF AL ARAFA HAJJ DAY (ISLAM)	<sup>16</sup> FATHER'S DAY / EID AL-ADHA STARTS / WAQF AL ARAFA HAJJ DAY (ISLAM)
<sup>17</sup> REFUGEE WEEK STARTS	<sup>18</sup> INTERNATIONAL DAY OF COUNTERING HATE SPEECH / AUTISTIC PRIDE DAY	<sup>19</sup> EID AL-ADHA ENDS / JUNETEENTH	<sup>20</sup> WORLD REFUGEE DAY / SUMMER SOLSTICE / LITHA (WICCA/PAGAN)	<sup>21</sup> WORLD HUMANIST DAY	<sup>22</sup> NATIONAL WINDRUSH DAY	<sup>23</sup> INTERNATIONAL WOMEN IN ENGINEERING DAY
24	25	26	27	28	29	30
1	2	3	4	5	6	7

In June, VERCIDA commemorates the resilience and triumphs of the LGBTQ+ community. We champion diversity, promote inclusivity and advocate for equality, with the collective goal of everyone feeling like they can live life as their authentic selves.



# CHALLENGING AGE PERCEPTION MONTH

M	T	W	T	F	S	S
1	2 THURGOOD MARSHALL'S BIRTHDAY	3	4	5	6 DALAI LAMA'S BIRTHDAY	7 MUHARRAM NEW YEAR (ISLAM)
8	9 MARTYRDOM OF THE BĀB (BAHĀ'Ī)	10	11 WORLD POPULATION DAY	12	13	14 INTERNATIONAL NON-BINARY PEOPLE'S DAY
15 WORLD YOUTH SKILLS DAY	16	17 INTERNATIONAL JUSTICE DAY	18 NELSON MANDELA INTERNATIONAL DAY / SOUTH ASIAN HERITAGE MONTH BEGINS	19	20	21 ASALHA PUJA / DHARMA DAY (BUDDHIST)
22	23 THE THREE WEEKS (WORK PERMITTED, EXCEPT SHABBAT) (JUDAISM) STARTS	24	25 ST JAMES THE GREAT DAY (CHRISTIAN)	26 AMERICANS WITH DISABILITIES ACT	27	28
29	30 INTERNATIONAL DAY OF FRIENDSHIP	31	1	2	3	4
5	6	7	8	9	10	11

This month we seek to challenge the stereotypes associated with age. We celebrate the strengths and different perspectives that come with age diversity, recognising the value and wisdom that individuals of all ages can bring to our communities and workplaces.





# INTERSECTIONALITY AWARENESS MONTH

# AUGUST

M	T	W	T	F	S	S
29	30	31	<sup>1</sup> LUGHNASADH LAMMAS (WICCA/ PAGAN)	2	3	4
<sup>5</sup> MUHARRAM (MUSLIM) ENDS	6	7	8	<sup>9</sup> INTERNATIONAL DAY OF THE WORLD'S INDIGENOUS PEOPLES	10	11
<sup>12</sup> INTERNATIONAL YOUTH DAY	<sup>13</sup> OBON (BUDDHIST)	14	15	16	17	18
<sup>19</sup> RAKSHA BANDHAN (HINDU) / THE 15TH OF AV (WORK PERMITTED) (JUDAISM)	20	21	22	<sup>23</sup> INTERNATIONAL DAY FOR THE REMEMBRANCE OF THE SLAVE TRADE AND ITS ABOLITION	24	25
<sup>26</sup> LORD KRISHNA'S BIRTHDAY / WOMEN'S EQUALITY DAY	27	28	29	30	<sup>31</sup> INTERNATIONAL DAY OF PEOPLE OF AFRICAN DESCENT	1
2	3	4	5	6	7	8

In August, we explore the interplay between social identities and how they contribute to our lived experiences. We seek to acknowledge the challenges faced by individuals who identify with multiple under-represented groups, and highlight societal blind spots in a bid to encourage inclusivity.



# PARENTS AND CARERS MONTH



# SEPTEMBER

M	T	W	T	F	S	S
26	27	28	29	30	31	1
2	3	4 RICHARD WRIGHT'S BIRTHDAY	5 INTERNATIONAL DAY OF CHARITY	6	7	8
9	10 WORLD SUICIDE PREVENTION DAY	11 PATRIOT DAY (USA)	12	13	14	15 WORLD AFRO DAY
16	17	18 INTERNATIONAL EQUAL PAY DAY	19	20 HEFORSHE	21 WORLD ALZHEIMER'S DAY / INTERNATIONAL DAY OF PEACE	22
23 BISEXUAL VISIBILITY DAY / INTERNATIONAL DAY OF SIGN LANGUAGES	24	25	26 EUROPEAN DAY OF LANGUAGES	27	28	29 INTERNATIONAL DAY OF THE DEAF
30	1	2	3	4	5	6

A time to recognise the contributions of parents and carers around the world. This month we focus on acknowledging and supporting individuals who balance caregiving with other aspects of life, and highlight how workplaces can cultivate inclusive environments for those with extra responsibilities.



# BLACK HISTORY MONTH

# OCTOBER

M	T	W	T	F	S	S
30	1 INTERNATIONAL DAY OF OLDER PERSONS	2 ROSH HASHANAH (JEWISH)	3	4	5	6
7 NATIONAL WORK-LIFE BALANCE WEEK	8 WORLD DYSLEXIA DAY	9	10 WORLD SIGHT DAY / WORLD MENTAL HEALTH DAY	11 YOM KIPPUR (JEWISH) / NATIONAL COMING OUT DAY	12	13
14	15	16 INTERNATIONAL PRONOUNS DAY	17 INTERNATIONAL DAY FOR THE ERADICATION OF POVERTY	18 WORLD MENOPAUSE DAY	19	20
21 INTERNATIONAL STAMMERING AWARENESS DAY	22	23	24	25	26 INTERSEX AWARENESS DAY	27
28	29	30	31 DIWALI (HINDU) STARTS	1	2	3
4	5	6	7	8	9	10

October marks Black History Month in the UK: a time to recognise and remember the rich cultural and historical contributions from the Black community. During this month we highlight the creativity, leadership and strength from Black men and women around the world.



# MEN'S HEALTH AWARENESS MONTH

# NOVEMBER

M	T	W	T	F	S	S
28	29	30	31	1	2	3
DIWALI (HINDU) ENDS <sup>4</sup>	5	6	7	8	WORLD FREEDOM DAY <sup>9</sup>	10
ARMISTICE DAY <sup>11</sup>	12	13	WORLD DIABETES DAY <sup>14</sup>	15	INTERNATIONAL DAY FOR TOLERANCE <sup>16</sup>	17
18	INTERNATIONAL MEN'S DAY <sup>19</sup>	TRANS DAY OF REMEMBRANCE <sup>20</sup>	21	22	23	24
INTERNATIONAL DAY FOR ELIMINATION OF VIOLENCE AGAINST WOMEN <sup>25</sup>	26	27	28	NATIVE AMERICAN HERITAGE DAY <sup>29</sup>	ST. ANDREW'S DAY (SCOTLAND) <sup>30</sup>	1
2	3	4	5	6	7	8

In November we shine a light on the physical and mental wellbeing of men. We encourage vulnerability and open conversations to raise awareness of the unique challenges faced by men, reduce stigma and promote healthy lifestyles for men.



# DISABILITY CONFIDENT MONTH

# DECEMBER

M	T	W	T	F	S	S
25	26	27	28	29	30	<sup>1</sup> WORLD AIDS DAY
<sup>2</sup> INTERNATIONAL DAY FOR THE ABOLITION OF SLAVERY	<sup>3</sup> INTERNATIONAL DAY OF PEOPLE WITH DISABILITIES	4	5	6	7	8
9	<sup>10</sup> INTERNATIONAL HUMAN RIGHTS DAY	11	12	13	14	15
16	17	<sup>18</sup> INTERNATIONAL MIGRANT'S DAY	19	20	<sup>21</sup> WINTER SOLSTICE	22
23	<sup>24</sup> CHRISTMAS EVE (CHRISTIAN)	<sup>25</sup> CHRISTMAS DAY (CHRISTIAN) HANUKKAH STARTS (JUDAISM)	<sup>26</sup> KWANZAA STARTS (AFRICAN DIASPORA) / BOXING DAY	27	28	29
30	<sup>31</sup> NEW YEAR'S EVE / HOGMANAY (CHRISTIAN)	1	2	3	4	5

This month, VERCIDA seeks to highlight the importance of fostering an inclusive and accessible environment for individuals with disabilities. Our aim is to break down barriers, mitigate stigma and increase understanding towards a society that values the diverse abilities of all.

